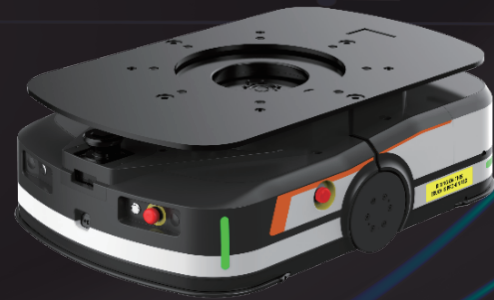


AMR Chassis

C060 & C100 Series

The C060 & C100 series AMR chassis supports mounting robotic arms, rollers, and other equipments. It also allows docking of non-standard units to meet various industrial needs. The product has 360° safety protection for secure human-machine interaction. The modular design enhances reliability and ease of maintenance.



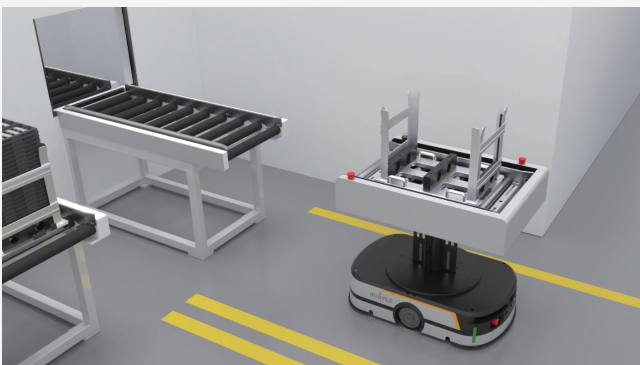
◆ Applications



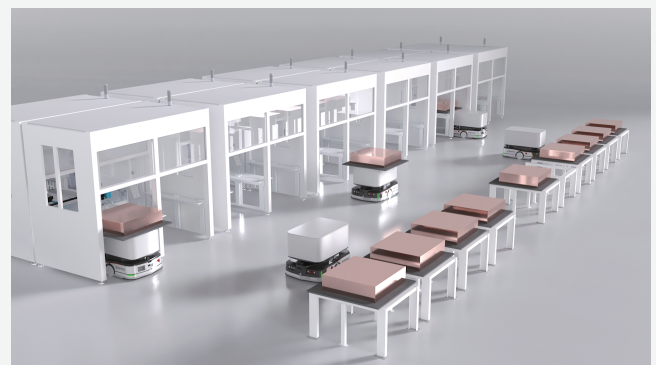
Automatic Feeding for 3C Production Line



Automatic Loading and Unloading of Semiconductor Equipment



Automatic Feeding for Auto Parts Production Line



PCB Production Line Handling

Zhejiang HuaRay Technology Co., Ltd.

- No.590 Chang'he Road, Binjiang District, Hangzhou, China
- <https://www.irayple.com/en/home>
- 400-681-8858 · overseas@irayple.com

※ This page will strive to provide accurate information to the best of its ability, but errors may still exist. The information is for reference only. In the event of updates to product information, no separate notifications will be given, and our company will not be held responsible for any resulting liabilities.



Website



LinkedIn



Facebook



YouTube



◆ Features

- Diverse transfer conveyance platform, customizable.
- Support docking with other non-standard mechanical devices.
- Accurate docking with various machine loading and unloading.
- Accurate stopping, safe and reliable.

◆ Parameters

Model	M060	M100
Dimensions L*W*H(mm)	950*650*300	
Load Capacity(kg)	600	1000
Conveyance Platform Types	Supports Single-Layer; Double-Layer; Elevating; Modular Customization;	
Navigation	Slam + QR Code + Texture	
Parking Accuracy(mm)	±10	
Direction Accuracy(°)	±1	
Safety	Front&Rear Laser; Front&Rear Bumper; Emergency Stop Button; Warning Light;	
Rated Speed(m/s)	1.5(Unloaded Max); 0.8(Rated Loaded)	
Movement Direction	Forward And Backward Bidirectional + Pivot Rotation	
Battery Cycle Life	1500 Cycles	
Battery Life(h)	Rated Operating Conditions≥6	
Charging Time(h)	Charging Time After Complete Discharge≤1.5	
Certification	CE/UL	

Zhejiang HuaRay Technology Co., Ltd.

- No.590 Chang'he Road, Binjiang District, Hangzhou, China
- <https://www.irayple.com/en/home>
- 400-681-8858 · overseas@irayple.com



Website



LinkedIn



Facebook



YouTube

※ This page will strive to provide accurate information to the best of its ability, but errors may still exist. The information is for reference only. In the event of updates to product information, no separate notifications will be given, and our company will not be held responsible for any resulting liabilities.